



FiltEdge for Our Best Air



FiltEdge LLC

Add: 15375 Barranca Pkwy Suite B-204 Irvine CA92618

Tel: +1 9496820025

Email: info@filtedge.com

www.filtedge.com

First Choice of Filter Medium



公司简介

>>> Company Profile

FiltEdge LLC has grown up to be one of the leading companies on the dust and liquid filtration & separation products in China, who specialized in meeting the different customers' requirements and applications.

We have more than 100 kinds of filtration products such as: polyester, aramid, PPS, acrylic, fiberglass, P84, PTFE, HST, and Basalt in different finishing etc. We have 6 needle punched felt production line and one PTFE membrane lamination line. Annual production capacity of high temperature resistance fabric has reached 6,000,000 square meters.

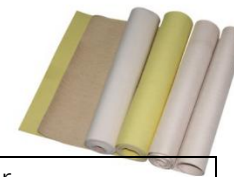
One of the most advantage of our company is fiberglass and its derivative. We are the only factory manufacture the glass fiber, glass yarn, glass sewing threads and woven and needle punched glass felt and glass fiber bags in one group company. Besides, singed, calendered, heat set finish, we also have water and oil repellent, PTFE coating and PTFE dipping treatment. Our company also supply related spare parts of baghouse: filter cage, venture. Customized products can be made according to customer's drawing

FiltEdge 是一家集生产销售为一体的大型无纺布滤料企业。公司经过多年的发展已经在国内环保过滤行业具有越来越重要的地位，长期以来，三帆人本着以诚信，创新，团结，奋进，合作，互利，共赢为发展理念，以净化环境、保护我们赖以生存的地球生态环境为己任、以创造和谐、清新、美好的人类生存空间为目标，配合国内外袋式除尘系统、净化系统的需要，着力开发了各类功能性的空气滤料、水过滤滤料、除水配件和水处理配件。

如现阶段正在热销中的具有特殊的各类拒水防油的针刺毡滤料，具有强耐化学腐蚀性的 Teflon 处理的过滤材料，表面平滑过滤精度很高的 PTFE 覆膜滤料，各类复合功能型滤料，以及强耐折耐磨经硅油，石墨处理的玻纤类机织布滤料，水过滤所用布料。过滤袋和过滤器等产品，并提供高品质的三针六线缝合的各类脉冲型、反吹风型除尘过滤布袋及相关除尘器配件和水过滤配件如：笼骨架，文丘里管，脉冲阀，过滤器，滤芯，溶剂等诸类相关产品。

我们真诚、专注、客户第一的服务态度已经赢得了广大新老客户的一致好评。同时我们公司与纺纱厂有密切的合作，能够提供各种高品质高性能的纺纶缝线，玻纤缝线，PTFE 缝线等。对于一些特殊的高温新开发的纤维原料，如 PTFE 纤维原料，芳纶纤维原料等，我们也有专门的采购渠道，能以非常优惠的价格提供给广大客户。另外，我们公司还有专门的技术团队可以针对不同的工矿条件研究提供专门的滤料解决方案，当然也可以根据客户的要求，量身定做客户需要的各类滤料产品，做到服务第一，质量保证，客户满意。竭诚欢迎广大新老客户来电来函，愿意为你们提供真诚的服务。

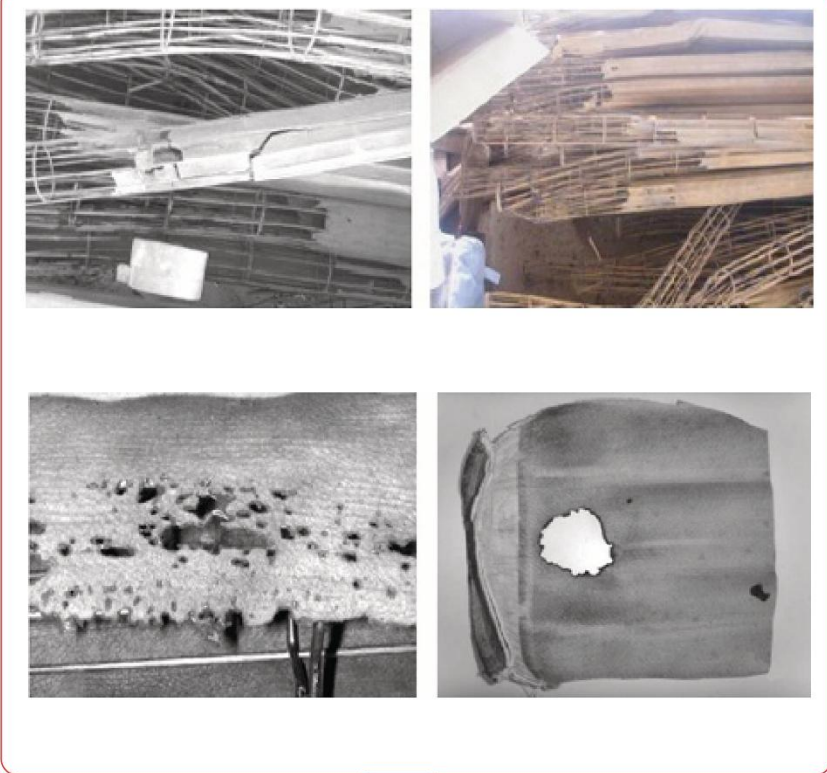
FiltEdge® End usage Investigation Table



Seller	Buyer
Company: FiltEdge LLC	Company:
Contact Person: Echo Zhang	Tel:
Mobile: +1 9496820025	Fax:
Mail: info@filtedge.com	Contact Person:
Website: www.filtedge.com	Website:

High temperature resistence

APPLICATION	<input type="checkbox"/> (Waste Incinerator)	<input type="checkbox"/> (Coal Grate Type)		
	<input type="checkbox"/> (Cement/Lime)	<input type="checkbox"/> (Coal Dust fired Boiler)		
	<input type="checkbox"/> (Metalurgical Process)	<input type="checkbox"/> (Coal Fluidized Bed Combustion)		
	<input type="checkbox"/> (Dryer/Calciner)	<input type="checkbox"/> (Others)		
FULE	<input type="checkbox"/> (Coal)	<input type="checkbox"/> (Waster)		
	<input type="checkbox"/> (Oil)	<input type="checkbox"/> (Bio Fule)		
	<input type="checkbox"/> (Gas)	<input type="checkbox"/> (Others)		
OPERATION CONDITIONS	<input type="checkbox"/>			
	Baghouse Type (P., Jer, etc.)			
	(Cleaning Mode)	<input type="checkbox"/> (on line)	<input type="checkbox"/> (off line)	
	(No. of Compartment/Bags)			
	(Bag Size mm)			
	(Filter Area m ²)			
	(Filter Area/m ²)			
	(Neutralization Process)	<input type="checkbox"/> (Dry)	<input type="checkbox"/> (Semi-dry)	<input type="checkbox"/> (Others)
	(No. of Shut-Down's/year)			
	(Operation)	<input type="checkbox"/> (Continuous)	<input type="checkbox"/> (Discontinuous)	
FLUE GAS CONDITION	(Flow rate Nm ³ /h)			
	(Baghouse op. Temp)			
	(Temperature Peaks)			
	(H ₂ O vol%)			
	(O ₂ vol%)			
	(CO ₂ vol%)			
	(N ₂ vol%)			
	(SO _X vol%)			
	(N ₂ vol%)			
	(HCL vol%)			
	(HF vol%)			
(Others)				
DUST	(Dust Load mg/Nm ³)			
	(Dust emission limit mg/Nm ³)			
	(Distemission Limit mg/Nm ³)			
	(PH)			
	(Other)			



合成纤维的化学稳定性和耐温性

Resistance of Synthetic Fiber to the Influence of Chemicals and to Temperatures

Filter Type 纤维种类	Continuous Temperature 持续温度	Peak Temperature 瞬间温度	Resistance to Hydrolysis 水解稳定性	Resistance to Acids 耐酸性	Resistance to Alkalies 耐碱性	Resistance to Oxidation 氧化稳定性	PH Value 允许PH值	Application 常用语行业及工况	Remark 备注
Polypropylene 聚丙烯	90°C	95°C	Excellent 优	Excellent 优	Excellent 优	Restricted 受限的	1-14	Applicable to food, flour, sugar, fertilizer, electroplating and pesticide industries 用于食品工业, 面粉, 制糖, 化肥厂, 电镀, 农药等工况的粉尘收集	Restricted resistance to oxidation, but excellent resistance to hydrolysis 抗氧化性能一般, 有很好的耐水解性
Polyacrylonitrile copolymer 共聚丙烯腈	115°C	120°C	good 良	moderate 中	moderate 中	good 良	6-13	Applicable to detergent industry and coal powder collection 用于洗涤剂, 煤粉等工况的粉尘收集	Good resistance to hydrolysis 良好的耐水解性
Polyacrylonitrile homopolymer 均聚丙烯腈	125°C	140°C	good 良	good 良	moderate 中	good 良	3-11	Applicable to detergent, waste incineration, asphalt, spray dryer, coal mill and power plant industries 用于洗涤剂, 垃圾焚烧, 沥青, 喷雾干燥器, 煤磨, 电厂等	Good resistance to hydrolysis 良好的耐水解性
Polyester 聚酯	150°C	150°C	Restricted 受限的	moderate 中	Restricted 受限的	good 良	4-12	Applicable to mine, limestone, cement, iron and steel industries, alumina delivery, electrolytic aluminium, non-ferrous metal production, wood processing, food processing and pharmacy industry. 应用于矿山, 石灰石粉, 水泥的生料, 磨粉, 焦炭, 钢铁行业中炼铁, 连铸, 烧结, 电炉除尘等各环节, 氧化铝手上磨粉, 电解铝尾气, 有色金属冶炼的烟气以及木材加工, 粮食加工, 制药等行业。	Good resistance to oxidation, while limited resistance to acids and alkalies. Service life will be affected by water content under high temperature 只有较好的抗氧化性能, 耐酸碱碱性一般。在较高温度时, 预期寿命会受烟气含水量的影响。
Polyphenylsulfide 聚苯硫醚	190°C	200°C	Excellent 优	Excellent 优	Excellent 优	moderate 中	1-14	Applicable to the working conditions with low oxidation gas from coal-fired boiler, waste incineration, metal smelting and chemical industries 应用于燃煤锅炉, 垃圾焚烧, 金属冶炼, 化工行业等低氧化性烟气收尘。	Moderate resistance to oxidation, but excellent resistance to acids and alkalies. 抗氧化性能不好, 但是具有优异的抗酸碱能力。
M-Aramid 偏芳族聚酰胺	200°C	220°C	moderate 中	moderate 中	moderate 中	moderate 中	5-9	Applicable to asphalt, non-ferrous metal production, ceramic, glass industries, Kiln in cement factories and blast furnace in steel factory 适用于沥青搅拌, 有色金属冶炼, 陶瓷, 玻璃, 水泥行业的窑头, 钢厂高炉煤气等工况的收尘。	Moderate resistance to oxidation. Characteristics will be influenced by water content under high temperature. 抗氧化能力一般。在较高温度时, 其性能受含水量影响。
Polyimide 聚酰亚胺	240°C	260°C	good 良	moderate 中	moderate 中	good 良	3-13	Applicable to the working condition with corrosive gas, such as chemical, metal smelting, waste incineration industries, cement kiln and coal-fired boiler 用于化工, 金属冶炼, 垃圾焚烧, 水泥窑尾, 燃煤过滤等中等腐蚀性烟气的收尘。	Excellent resistance to high peak temperature 优异的耐短时高温能力
Polytetrafluoroethylene 聚四氟乙烯	250°C	280°C	Excellent 优	Excellent 优	Excellent 优	Excellent 优	1-14	Applicable to the working condition with high corrosive gas and high temperature, such as chemical industry, coal-fired boiler, waste incineration industry and non-ferrous metal production 用于化工行业, 燃煤锅炉, 垃圾焚烧, 有色金属冶炼等含有很高腐蚀性的高温烟气收尘。	Excellent resistance to all chemical influences. 优异的抗各种化学腐蚀的性能

玻纤参数
Woven fiberglass specification data

Model No 型号	Material 材质	Weaving type 织物结构	Weight (g/m ²) 克重	Air permeability (cm ³ /m ² s @ 127Mpa) 透气量	Tensile Strength (N/25cm) 强力拉伸	Warp 经	Weft 纬	Finish 处理方式	Application 应用
SFF-01	E-glass (T)	Double twill	760±20	2.5	>2400	>2000		PTFEMembrane	Cement industry: 1. CaO dust produced in the decomposition process of CaCO dust which is not decomposed safely from the cement raw meal in the decomposing furnace; 2. Gases such as SO ₂ , NO, CO, CO ₂ produced in the calcination process of pulverized coal for calcination; 3. The exhaust gas discharged from the cyclone reaches a high temperature of at least 320°C and is dry; 4. The dust reaches a density of 40-130mg/Nm ³ , with 90% in a dust particle diameter less than 10µm; with a NO content of less than 250Ppm; a NO _x content of 100-1700mg/Nm ³ ; 5. CO and CO ₂ contents sometimes fluctuate with the calcination sufficiency of pulverized coal; 水泥磨高尘特征 1. 水泥原料分解炉中未安全分解的CaCO ₃ 粉尘, CaCO ₃ 在分解过程中产生的CaO粉尘; 2. 磨粉用煤粉在进粉过程中产生的SO ₂ , NO, CO, CO ₂ 等气体; 3. 磨粉废气从旋风除尘器出来的温度达320°C以上, 气体干燥; 4. 粉尘浓度达40-130mg/Nm ³ , 粉尘粒径小于10µm的占90%以上; NO含量为250Ppm左右; SO ₂ 含量100-1700mg/Nm ³ ; CO, CO ₂ 含量有时根据煤粉的数量波动;
SFF-02	E-glass (T)	Double twill	760±20	2.5	>2400	>2000		PTFEMembrane	
SFF-03	E-glass (T)	Double twill	760±20	<30	>2400	>2000		PTFEDipping	
SFF-04	E-glass (T)	1/3 twill	340±15	2.5	>1300	>800		PTFEMembrane + Acid resistance	Iron alloy industry Features of working conditions of iron alloy 1. High and significantly fluctuated temperature of fume, unstable working conditions 2. Light and fine dust, with 90% of ferrosilicon dust in a particle diameter < 5µm 3. High adhesion of dust tends to cause dust cake 4. The filtration medium is required to be anti-corrosive, heat-resistant with good dust cleaning performance. 铁合金行业工况特征
SFF-05	E-glass (T)	1/3 twill	450±15	<33	>2000	>1000		PTFEDipping, silicon and graphite	
SFF-06	E-glass	Double weft	550±15	<45	>2000	>2000		graphite	
SFF-07	E-glass	Double weft	590±15	2.5	>2000	>2000		PTFEDipping - graphite	
SFF-08	C-glass	Double weft	590±15	<45	>2000	>2000		graphite	1. 烟气温度高, 波动大, 工况条件不确定 2. 粉尘粒径, 硅粉粉尘粒径<5µm的占90% 3. 粉尘粘性大, 易糊袋 4. 要求材料耐腐蚀, 耐温过滤清灰性好
SFF-09	E-glass+ptfe	Double twill	820±20	2.5	>2000	>2000		PTFEMembrane	Waste incineration industry Features of working conditions of waste incineration 1. Waste contains complex and seriously harmful components, with high requirements for treatment; 2. Unstable temperature and amount of fume, at a temperature ranging between 140°C-260°C 3. High temperature of fume up to 60%, tending to cause bag sticking 4. The fume contains dust of high density up to 50g/m ³ , being light and fine 5. The fume has a relatively high content of corrosive substance, causing rise in acid dew point. 垃圾焚烧行业垃圾焚烧工况特征
SFF-10	Refrasil	Double twill	760±20	<30	>2400	>2400		PTFEDipping	1. 垃圾成分复杂, 渣量大, 治理要求高; 2. 烟气温度和烟气量不稳定, 烟气温度在140°C-260°C之间 3. 烟气温度高, 最高可达60%, 易糊袋 4. 烟气粉尘浓度高, 最高可达50g/m ³ , 粉尘粒径 5. 烟气中腐蚀性物质含量较多, 导致酸露点升高
SFF-11	Refrasil	Double twill	760±20	2.5	>2400	>2400		PTFEMembrane	
SFF-12	E-glass+ptfe	Double twill	820±20	2.5	>2000	>2000		PTFEMembrane	
SFF-13	Refrasil	Double twill	760±20	<30	>2400	>2000		PTFEDipping	Power industry Features of working conditions of coal-fired power plant 1. Relatively high density of dust at the inlet of deduster 2. The fume has a high content of components such as SO ₂ , NO, O ₂ , which have a strongly destructive effect on the filtration medium 3. Fume amount is exposed to significant fluctuation with the changes in coal type and power generation load 4. Filtration velocity is generally about 1.0, the dust cleaning is mostly conducted by means of pulsed dust cleaning or rotary back blow 电厂行业 燃煤电厂工况特征 1. 除尘入口粉尘浓度比较高 2. 烟气中对滤料有强烈破坏作用的SO ₂ , NO, O ₂ 等成分含量较高 3. 由于煤种及发电负荷变化, 烟气量波动大 4. 过滤风速一般1.0左右, 清灰方式多为脉冲清灰或回转反吹
SFF-14	Refrasil	Double twill	760±20	2.5	>2400	>2000		PTFEMembrane	
SFF-15	Refrasil	Double twill	760±20	<30	>2400	>2000		Acid resistance	
SFF-16	Refrasil	Double twill	760±20	2.5	>2400	>2000		PTFEMembrane + Acid resistance	
SFF-17	E-glass (T)	1/3 twill	480±15	<30	>2000	>1200		Acid resistance	Chemical industry Features of working conditions of chemical industry 1. With a high initial density, carbon black is a nonaerosol substance with a small particle diameter, specific gravity and strong adhesion. 2. The working temperature of main filter ranges between 270°C-280°C, that of waste filter is around 250°C. 3. The oil pre-heater has a working temperature >350°C, about 400°C, which requires cooling by water mist spray, while with a large amount of CO, SO ₂ , SO ₃ contained in fume, it will generate sulfuric acid. 4. Flammable and explosive gas is involved, with a large amount of water vapor, and 1 ton of water vapor can produce 1600m ³ of water vapor 5. Inlet pressure 200pa, outlet pressure 3,500-4,000pa, counter-blowing pressure 5,000pa 化工行业 行业工况特点 1. 初始浓度高, 炭黑颗粒粒径小, 比重小, 附着性强 2. 主滤器工作温度在270°C-280°C, 废滤器的工作温度在250°C左右 3. 油预热器工作温度>350°C, 约400°C左右, 需喷水雾降温, 烟气中含有大量CO, SO ₂ , SO ₃ , 会产生硫酸 4. 会伴有易燃易爆, 水汽大, 处理1吨水产生1600m ³ 水汽 5. 进口压力200pa, 出口压力3500-4000pa, 反吹压力5000pa
SFF-18	E-glass	Double weft	550±15	<45	>2000	>2000		graphite	

粉尘清灰方式

>>> Dust Separation Procedure

Different dust separation procedures require different weights and air permeability values for filter media.
不同的清灰方式要求选择不同克重和透气量的滤料。

Rules:

- The more effective the cleaning process, the more compact and heavier the filter medium can be.
- The higher the emission control standards, the heavier the filter medium should be.

规则：

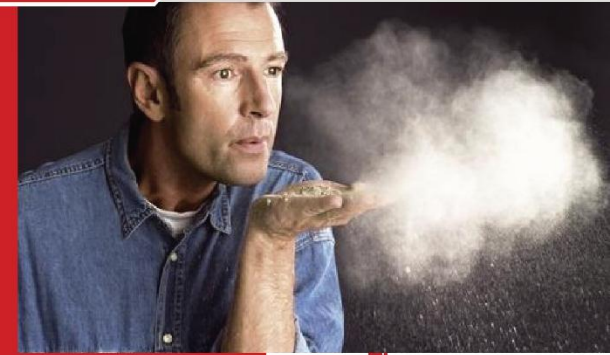
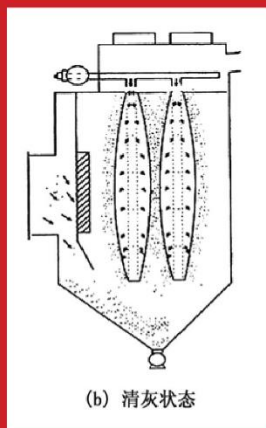
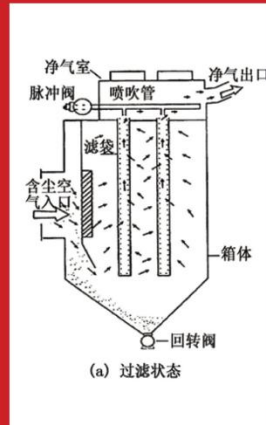
- 清灰压力越有效，则应使用越紧密，克重越大的滤料。
- 排放要求越高，率了的克重要求越高

Tops : If these factors are well considered in advance, running cost like electricity for the fan or pressured-air for the cleaning pulses can be saved later on in a great amount.

提示: 如果这些因素都被提前充分的考虑到了, 那么总体的运行成本, 例如风机转动所消耗的电或者脉冲清灰所需的压缩空气, 将大大节省。

脉冲清清灰式除尘袋

Dust Separation Procedure 清灰方式	Weight 克重 (g/m ²)	Air Permeability 透气量	
		mm/s @200Pa	l/(dm ² min) @200Pa
Intermittent Shaking 振打清灰	300-350	667-1000	400-600
Shaking-and reverse air 振动和反吹风清灰	350-450	417-667	250-400
Low pressure cleaning 低压清灰	400-500	250-583	150-350
PulseJet 脉冲清灰	500-650	83-250	90-150



粉尘

Besides the necessary knowledge about the dust source and the process conditions, the following criteria are of decisive importance for recommending the appropriate surface of the filter media.

除了了解粉尘的来源和烟气处理工艺的必需知识外, 一下参数在选择合适的滤料处理方式时也起着决定性的作用。

1. Dust Concentration
- dust proportion in raw gas
2. Dust composition
- particle size
- chemical composition of the dust\
3. Dust Characteristics
- electrostatic properties
- tendency to agglomerate
- hygroscopic properties
- settling rate
- abrasiveness
- bulk density

1. 粉尘浓度
- 粉尘在初始烟气中所占的比例
2. 粉尘成分
- 粉尘粒径分布
- 粉尘的化学成分构成
3. 粉尘性质
- 带电性
- 凝聚性
- 吸湿性
- 堆积性
- 磨蚀性
- 容积密度

Typical dust properties with the appropriate surface treatment 粉尘性质和滤料的表面处理	PP	AC	DT	PE	Aramid	PPS	P84	PTFE
Free flowing 自由流动	Singed on one side or both side 单面烧光&双面烧光	Singed on one side or both side 单面烧光&双面烧光	Singed on one side or both side 单面烧光&双面烧光	Singed on one side or both side 单面烧光&双面烧光	Singed on one side or both side 单面烧光&双面烧光	Singed on one side or both side 单面烧光&双面烧光	Singed on one side or both side 单面烧光&双面烧光	
Agglomerating 凝聚性	Calendered face side 单面亚光	Calendered face side 单面亚光	Calendered face side 单面亚光	Calendered face side 单面亚光	Calendered face side 单面亚光	Calendered face side 单面亚光	Calendered face side 单面亚光	
Extremely fine 粒径细小	PTFEmembrane 覆膜	PTFEmembrane 覆膜	PTFEmembrane 覆膜	PTFEmembrane 覆膜	PTFEmembrane 覆膜	PTFEmembrane 覆膜	PTFEmembrane 覆膜	
Abrasive 腐蚀性	Singed on one side or both side&oriented antiadhesive finish 单面烧光 & 定向清灰处理	Singed on one side or both side&oriented antiadhesive finish 单面烧光 & 定向清灰处理	Singed on one side or both side & oriented antiadhesive finish 单面烧光&双面烧光&定向清灰处理	Singed on one side or both side & oriented antiadhesive finish 单面烧光&双面烧光&定向清灰处理	Singed on one side or both side & oriented antiadhesive finish 单面烧光&双面烧光&定向清灰处理	Singed on one side or both side & oriented antiadhesive finish 单面烧光&双面烧光&定向清灰处理	Singed on one side or both side & oriented antiadhesive finish 单面烧光&双面烧光&定向清灰处理	
Humid 潮湿性	full bath water repellent& full bath oil and water repellent for optimal cake release 防水浸渍处理&防油水易清洗浸渍处理	full bath water repellent& full bath oil and water repellent for optimal cake release 防水浸渍处理&防油水易清洗浸渍处理	full bath water repellent& full bath oil and water repellent for optimal cake release 防水浸渍处理&防油水易清洗浸渍处理	full bath water repellent& full bath oil and water repellent for optimal cake release 防水浸渍处理&防油水易清洗浸渍处理	full bath water repellent& full bath oil and water repellent for optimal cake release 防水浸渍处理&防油水易清洗浸渍处理	full bath water repellent& full bath oil and water repellent for optimal cake release 防水浸渍处理&防油水易清洗浸渍处理	full bath water repellent& full bath oil and water repellent for optimal cake release 防水浸渍处理&防油水易清洗浸渍处理	
Sticky 粘结性	Calendered face side&full bath water and oil repellent finish for optimal cake release 单面亚光&防油水易清洗浸渍处理	Calendered face side&full bath water and oil repellent finish for optimal cake release 单面亚光&防油水易清洗浸渍处理	Calendered face side & full bath water and oil repellent finish for optimal cake release 单面亚光&防油水易清洗浸渍处理	Calendered face side & full bath water and oil repellent finish for optimal cake release 单面亚光&防油水易清洗浸渍处理	Calendered face side & full bath water and oil repellent finish for optimal cake release 单面亚光&防油水易清洗浸渍处理	Calendered face side & full bath water and oil repellent finish for optimal cake release 单面亚光&防油水易清洗浸渍处理	Calendered face side & full bath water and oil repellent finish for optimal cake release 单面亚光&防油水易清洗浸渍处理	PTFE dipping 浸渍
Electrostatic chargeability 带电性	mixture of carbon fiber & SS conductive fibers & PANCu fibre 碳纤维&不锈钢导电丝及交叉导电布&碳纶导电纤维	SS conductive fibers & PANCu fibre 不锈钢导电丝及碳纤维	mixture of carbon fiber & SS conductive fibers & PANCu fibre 碳纤维&不锈钢导电丝及交叉导电布&碳纶导电纤维	mixture of carbon fiber & SS conductive fibers & PANCu fibre 碳纤维&不锈钢导电丝及交叉导电布&碳纶导电纤维	mixture of carbon fiber & SS conductive fibers & PANCu fibre 碳纤维&不锈钢导电丝及交叉导电布&碳纶导电纤维	SS conductive fibers 不锈钢导电丝	SS conductive fibers 不锈钢导电丝	SS conductive fibers 不锈钢导电丝
Occasional spark flow 含沉气体中偶尔含有火花或高温颗粒	flame retardant 阻燃处理	flame retardant 阻燃处理	flame retardant 阻燃处理	flame retardant 阻燃处理				
Acid/Alkaline 酸性/碱性					Acid repellent finish 防酸处理			
Prophoric dust 可燃性	flame retardant 阻燃处理	flame retardant 阻燃处理	flame retardant 阻燃处理	flame retardant 阻燃处理				

Typical dust properties with the appropriate surface treatment 粉尘性质和滤料的表面处理	PP	AC	DT	PE	Aramid	PPS	P84	PTFE
自由流动 Free flowing	A	A	A	A	A	A	A	
凝聚性 Agglomerating	B	B	B	B	B	B	B	
粒径细小 Extremely fine	C	C	C	C	C	C	C	
腐蚀性 Abrasive	A&D	A&D	A&D	A&D&F	A&D	A&D	A&D	
潮湿性 Humid	G&H	G&H	G&H	G&H	G&H&I	G&H	G&H	
粘结性 Sticky	J & H	J & H	J & H & L & M	J & H & L & M	J & H & L & M & I	J & H & L & M	J & H & L & M	L
带电性 Electrostatic chargeability	N & O & P & Q	O & Q	N & O & P & Q	N & O & P & Q	O	O	O	O
含沉气体中偶尔含有火花或高温颗粒 Occasional spark flow	R	R	R	R				
酸性/碱性 Acid/Alkaline					I			
可燃性 Prophoric dust	R	R	R	R				

Singed on one side or both side 单面烧光&双面烧光	A	full bath antiadhesive finish 高效易清灰处理	F	acid resistance finish 防酸处理	I	SS conductive fibers 不锈钢导电丝	O
Calendered face side 单面亚光	B	full bath water repellent 防水浸渍处理	G	Calendered face side 单面亚光	J	conductive matrix 交叉导电电布	P
PTFE membrane 覆膜	C	full bath oil and water repellent for optimal cake release 防油水易清洗浸渍处理	H	PTFE dipping, oil and water repellent 浸渍, 防油水处理	M	PANCu fibre 碳纤维	Q
oriented antiadhesive finish 易清灰处理	D						

Production of filter bag 布袋加工工艺

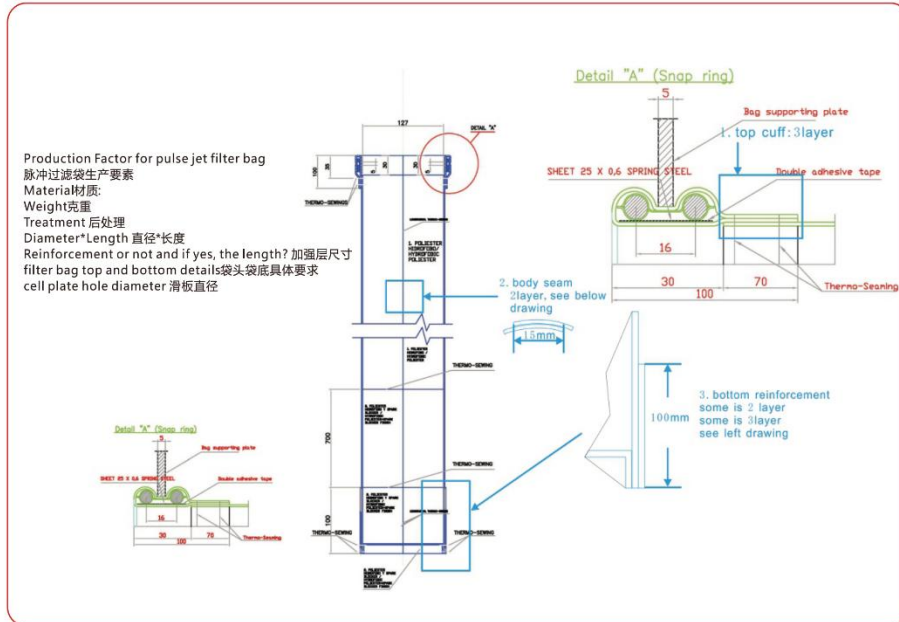


袋子的种类

>>> Dust filter bag types

- 1.pulse jet filter bags
- 2.Envelop bags
- 3..Reverse air filter bags
- 4.Pleated filter bag

Drawing of pulse jet filter bag as reference



玻纤及其他配件

>>> fiberglass filter cloth & bag and other accessory



除尘布袋生产设备

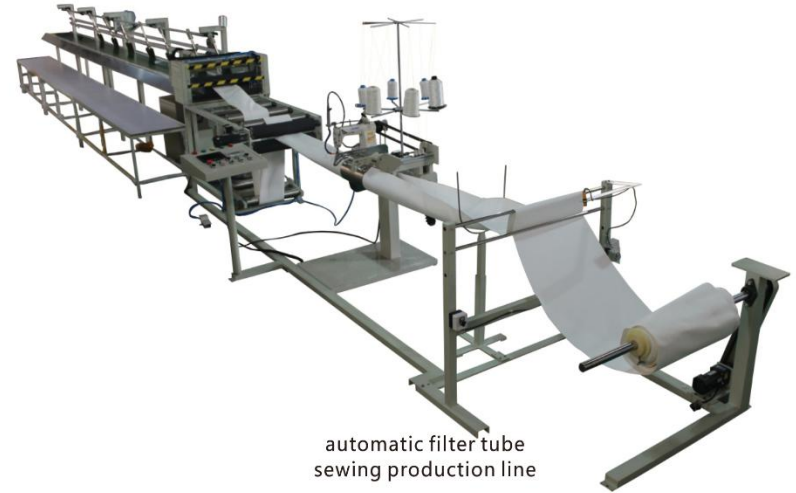
>>>Filter bag making machine



Sitting machine



Hot melt machine



automatic filter tube sewing production line



long arm sewing machine



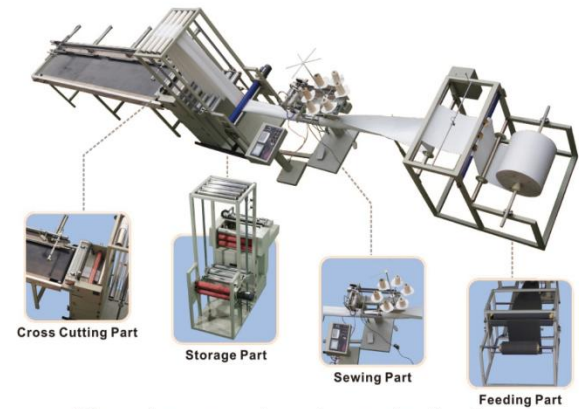
Manually filter bag sewing machine



Snap ring sewing machine



long arm sewing machine



Filter tube automatic sewing production line